



# GMT MONTHLY MEMBERSHIP PROGRESS REPORT

Results as of: 5/31/2020

Multiple District 13

LOCATION: OHIO

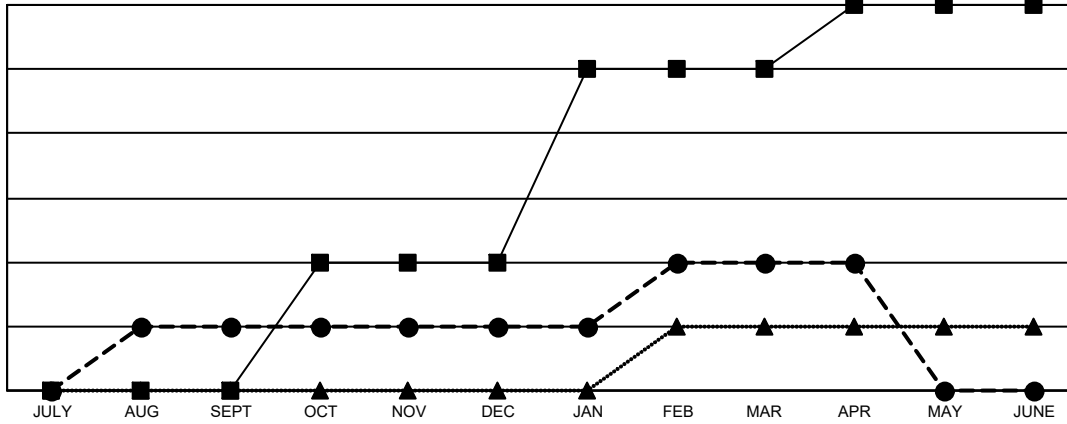
GMT: OPEN

GMT CA 1

Clubs			
RESULTS FOR 2019-2020			
QUARTER	NEW CLUB GOAL	NEW CLUBS	DROPPED CLUBS
JULY/AUG/SEPT	0	1	0
OCT/NOV/DEC	2	0	2
JAN/FEB/MAR	3	1	3
APR/MAY/JUNE	1	0	2

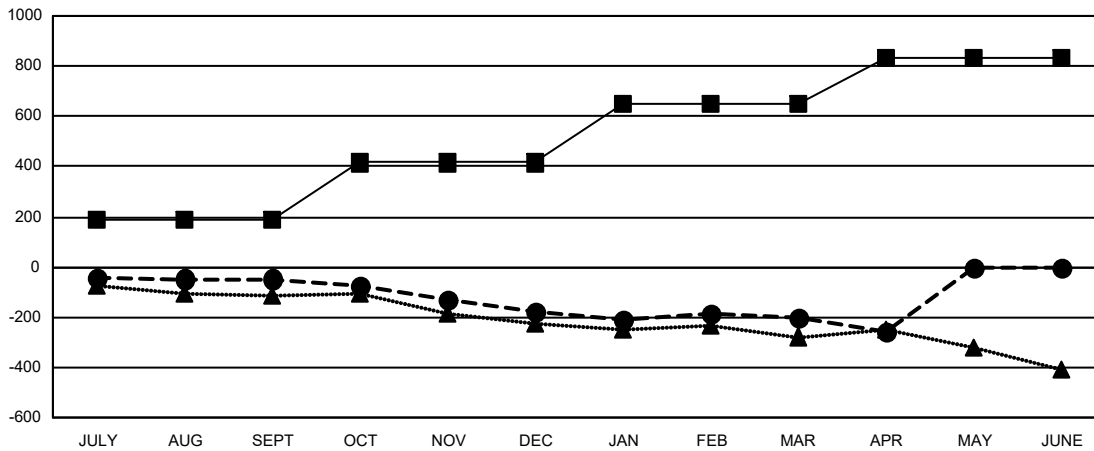
Members			
RESULTS FOR 2019-2020			
QUARTER	MEMBER GROWTH NET GOAL	MEMBER GROWTH ACTUAL	DROPPED MEMBERS ACTUAL (including transfers)
JULY/AUG/SEPT	185	205	229
OCT/NOV/DEC	230	179	297
JAN/FEB/MAR	235	263	251
APR/MAY/JUNE	180	22	71

GOALS AND ACTUAL NEW CLUBS CUMULATIVE



- - CURRENT YEAR GOALS FOR NEW CLUBS
- - CURRENT YEAR ACTUAL NEW CLUBS
- ▲ - LAST YEAR ACTUAL NEW CLUBS

GOALS AND ACTUAL MEMBERS CUMULATIVE



- - MEMBER GROWTH NET GOAL
- - MEMBER GROWTH ACTUAL
- ▲ - LAST YEAR MEMBERSHIP ACTUAL

DROPPED CLUBS: 7	
<b>DROPPED MEMBERS</b>	
DECEASED	163
CLUB CANCELLED	36
OTHER	649
<b>TOTAL</b>	<b>848</b>

193 CLUBS OF 394 ADDED 1 OR MORE NEW MEMBERS
<a href="#">CLICK HERE FOR CUMULATIVE MEMBERSHIP DATA</a>

<b>GENDER DISTRIBUTION</b>	
MALE	7,760 (71.09%)
FEMALE	3,155 (28.91%)
TOTAL FAMILY UNIT MEMBERS	2,151
FAMILY MEMBERS PAYING HALF DUES	1,100